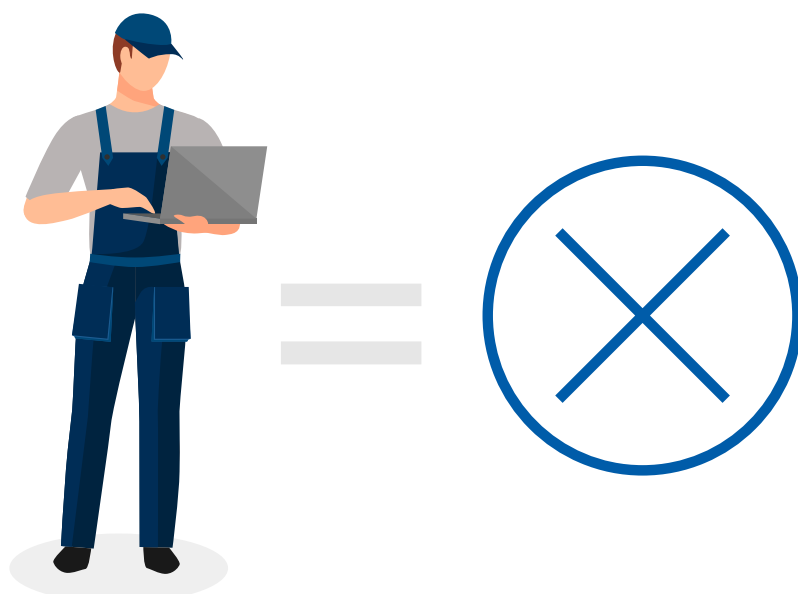


MOT MONEY SAVING TIPS



Regular and basic maintenance like **replacing bulbs, wipers and tyres** can help avoid MOT fails and save money.



Testing data shows that around **40% of cars fail their MOT at the first attempt**

This Infographic Highlights The Common Causes Of Defects Leading To MOT Fails

COMMON MOT FAILS

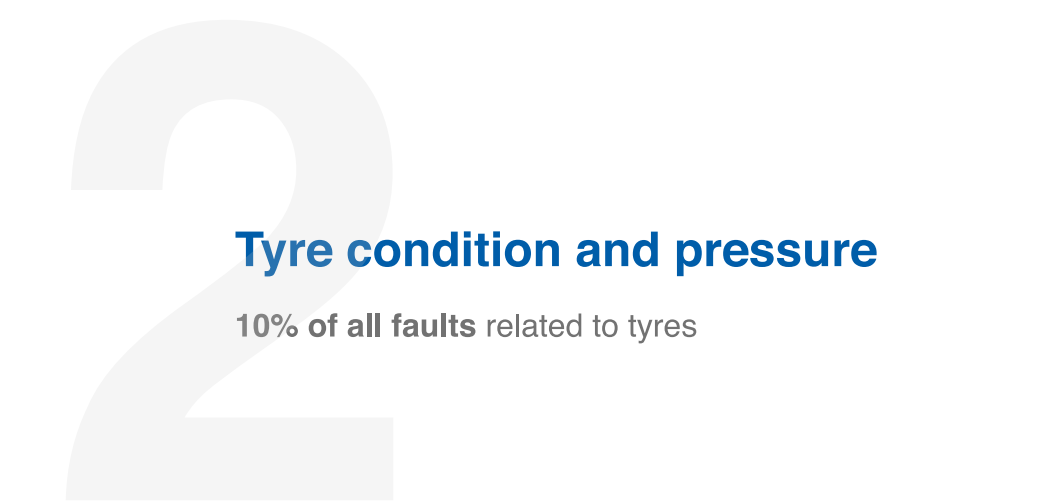
YOU CAN AVOID THE COMMON MOT FAILS BY CHECKING:



1

Lightbulbs are working

30% of all faults related to lighting and signalling



2

Tyre condition and pressure

10% of all faults related to tyres



3

Mirrors, wipers and washers

8.5% of all faults related to 'Driver's view of the road'

FAILURE RATE

BY KEY DEFECTS BY CLASS OF MOT

CLASS	VEHICLE TYPE	AGE FIRST MOT NEEDED (YEARS)	CAN HELP AVOID			NEED PROFESSIONAL			OVERALL FAILURE RATE							
			LIGHTING & SIGNALLING	TYRES	DRIVERS VIEW OF THE ROAD	BRAKES	STEERING	SUSPENSION								
1	Motorcycle with or without sidecar (engine size up to 200cc)	3	39.40%	10.80%	n/a	18%	15.50%	n/a	19.20%							
2	Motorcycle with or without sidecar (engine size over 200cc)	3														
3 & 4	3-wheeled vehicles (450kg+ unladen weight)	3														
4	Cars (up to 8 passenger seats)	3														
4	Motor caravans	3														
4	Quads (max unladen weight 400kg - for goods vehicles 550kg and max net power of 15kw)	3														
4	Dual purpose vehicles	3														
4	Private hire and public service vehicles (up to 8 seats)	3								30%	10%	8.50%	17.20%	n/a	18.70%	38.30%
4	Ambulances and taxis	1														
4	Private passenger vehicles and ambulances (9 to 12 passenger seats)	1														
4	Goods vehicles (up to 3,000kg design gross weight)	3														
4a	Class 4 vehicles (9 to 12 passenger seats) with a seat belt installation check	n/a														
5	Private passenger vehicles and ambulances (13 to 16+ passenger seats)	1														
5	Playbuses	1	27.90%	4.30%	7.30%	22.80%	n/a	10.80%	34.20%							
5a	Class 5 vehicles (13 to 16+ passenger seats) with a seat-belt installation check	n/a														
7	Goods vehicles (over 3,000kg up to 3,500kg design gross weight)	3	32.20%	4.80%	7.30%	24.80%	n/a	16.10%	49%							